



USER GUIDE

SNP2026

SNIPER™
AUTO GLASS REMOVAL TOOL

SNP011926.A



Equalizer
SNIPER™
SNP2026

Equipped with a powerful, brushless motor, the Equalizer® Sniper™ cuts through the toughest urethane with precision. Designed for technician comfort, the Sniper™ features advanced, vibration reduction technology to minimize fatigue during prolonged use. The quick-connect blade clamp allows you to change blades quickly and easily. Combined with an ergonomic grip and balanced weight distribution design, the Sniper™ is your new go-to tool for safe, efficient removals.

ACCESSORIES

- RLE1404 - Express™ Blade 3" x 14"
- DCB205 - 20V Li-Ion Battery
- DCB1104 - 20V Battery Charger 12V/20V
- FSG130 - Kool Safety Glasses

SPECIFICATIONS

- Power Source: 20 Volts
- Output: 20 Volt Battery
- Strokes Per Minute: 0-2800

SAFETY INFORMATION

- Use proper vehicle and personal protection during use.
- Do not activate the tool until it is in the cutting position. Use light forward pressure.
- The blade is sharp and can cut even when the tool is not running.
- Do not lay tool on the dash, the blade and sheath can be hot after use and could damage the dash.
- Unplug from electric source when not in use.
- Do not use tool in rain or damp weather.

BEFORE YOU BEGIN

- Make sure to sharpen the blade between each removal with an SFE329 Blade Sharpener.
 - A dull blade can cause damage to the tool. Use caution.
- Use water as a cutting lubricant on the cutting area and blade.
- To keep the sheath cool, periodically apply a light film of 4237 High Heat Grease to the blade shaft.
- Do not hit the pinchweld as it will damage your tool.

INSTRUCTIONS

Spray the entire cutting area and blade with plenty of water. To prevent rust, place a few drops of oil into the sheath every day and allow it to run down into the blade holder. Start cutting from the inside top center of the glass and cut toward the A-pillars. Keep the blade properly orientated and flat against the glass. Reverse and cut from the top center of the glass toward the other A-pillar. Relax and let the tool do the work.

After the sides are loose, cut the bottom of the glass loose, utilizing one or a combination of two cutting methods:

1. Plunge Cut - Cut straight down, move over three inches and repeat this process until finished cutting.
2. Angle Cut - Turn the tool at roughly a 45-degree angle and cut along the bottom until finished.

CHANGING THE BLADE

The blade is installed by rotating the quick release mechanism, fully inserting the shaft of the blade through the sheath and into the quick release mechanism. Ensure the quick release returns to its original position, fully securing the blade.



CHANGING THE SHEATH

1. Loosen the screws with a 3/16" hex wrench.
 2. Remove the old sheath.
 3. Insert the new sheath until it touches the built-in sheath stop. Do not insert the sheath past the stop.
- *Please note that the sheath is not adjustable.

BATTERY USAGE AND CARE

Fully charge your battery before use. Gently slide the battery into the tool until you hear it "click" into place.

WARRANTY COVERAGE

Equalizer® Sniper™ is warrantied for ONE year to be free of factory defects from the date of purchase. Equalizer® warrants this product is free from defects in materials and workmanship when used for the purpose intended, under normal conditions, and provided it receives the proper care and maintenance as described in the User Guide section. This warranty is good only for authentic, original, legitimate tools manufactured by Equalizer® and sold through Authorized Distributors or from Equalizer® directly.

NOT COVERED BY WARRANTY

- Abuse, misuse, normal wear and tear to tool or accessories.
- Damage due to repairs being made by unauthorized persons.
- Damage caused by not keeping blades sharp, using blade past the "DO NOT SHARPEN BELOW THIS LINE", and not replacing damaged blades and sheaths.
- Using anything other than a DeWalt® DCB205 20-Volt Battery.

WARRANTY CLAIMS

Equalizer® will repair or replace, at our discretion, any defective part. Our goal is for tools to be repaired and sent back the same day they are received.

Equalizer® reserves the right to refuse repair, at our expense, any tool which has not been properly maintained as specified in the User Guide and Warranty Section.

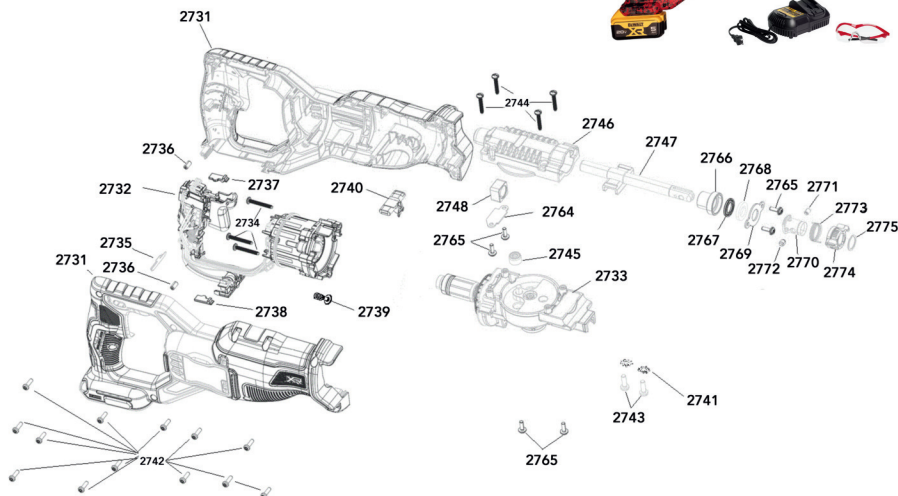
To send in your tool for repair, contact Equalizer® to receive a RMA number. If you have any questions about your tool call us at 512.388.7715, or email sales@equalizer.com.

Please send the entire tool & accessories to:

Equalizer®

Attention: Repair Department/ RMA# _____

2611 Oakmont Drive Round Rock, TX 78665 USA



Part No.	Description of part	Qty Req
2731	HOUSING SA for SNP2026	1
2732	STATOR SA for SNP2026	1
2733	GEARCASE SA for SNP2026	1
2734	SCREW for SNP2026	3
2735	PLATE for SNP2026	1
2736	RUBBER for SNP2026	2
2737	INSERT for SNP2026	1
2738	INSERT for SNP2026	1
2739	SPRING for SNP2026	1
2740	BUTTON LOCK-OFF for SNP2026	1
2741	WASHER LOCK for SNP2026	2
2742	SCREW for SNP2026	13
2743	SCREW for SNP2026	2
2744	SCREW for SNP2026	4
2745	BEARING for SNP2026	1
2746	GEARCASE COVER SA for SNP2026	1
2747	SHAFT for SNP2026	1
2748	BEARING for SNP2026	1
2764	PLATE for SNP2026	1
2765	SCREW for SNP2026	6
2766	BEARING for SNP2026	1
2767	SEAL for SNP2026	1
2768	FELT SEAL for SNP2026	1
2769	RETAINING PLATE for SNP2026	1
2770	SLEEVE for SNP2026	1
2771	PIN for SNP2026	1
2772	PIN for SNP2026	1
2773	SPRING TORSION for SNP2026	1
2774	COLLAR for SNP2026	1
2775	RING for SNP2026	1
I-0700	Sheath Holder Assembly for SNP2026 (includes 2-pc sheath clamp, 2651 screws & ES1406 sheath)	1
DCB205	DeWalt® 20V Li-Ion Battery	1
DCB1104	DeWalt® 20-Volt Battery Charger 12V/20V	1
ES1406	Equalizer® Express™ Sheath	1

NEED TO REQUEST
AN RMA FOR A
REPAIR?



EQUALIZER INDUSTRIES INC.
www.equalizer.com • 512-388-7715
2611 Oakmont Dr Round Rock, TX 78665

This document, including all instructions, diagrams, schematics, and specifications, is the proprietary property of Equalizer Industries, Inc. It is provided solely for the operation and maintenance of the associated product. Unauthorized reproduction, distribution, modification, or use of this document or its contents without prior written consent is prohibited.

© 2026. All rights reserved.